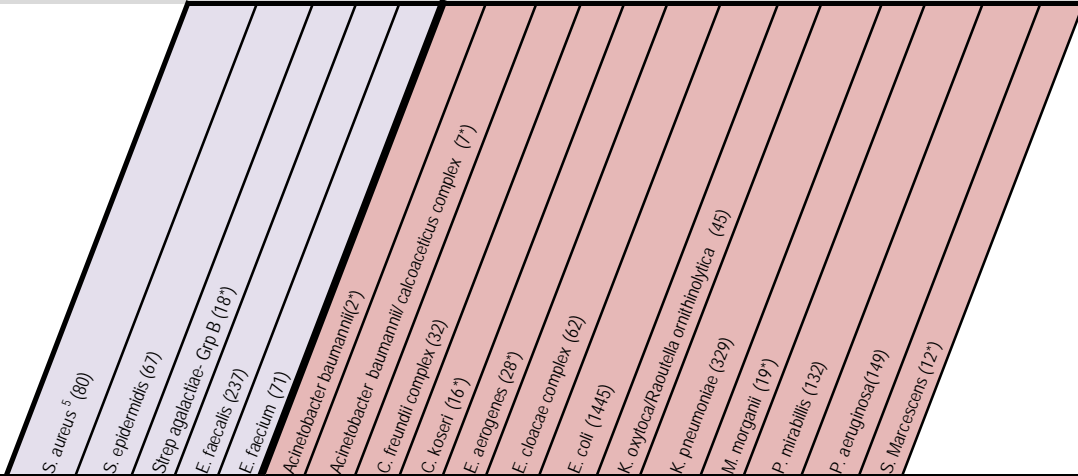




BACTERIUM (# of isolates) URINE

Questions? Microbiology 775-8361 ID Pharmacist 775-9877 IP Pharmacy 775-9175



****Values in boxes below represent percent susceptible****

Adjust Dose In Renal Impairment Relative Cost Per Day

Table with columns for Antimicrobial Agent, Bacteria, and Susceptibility percentages. Rows are categorized by antimicrobial class: BETA-LACTAMS, CEPHALOSPORINS, AMINOGLYCOSIDES, FLUOROQUINOLONES, and OTHERS. Each cell contains a percentage value representing susceptibility.

(*) Decreased statistical validity with <= 30 bacterial isolates, exercise discretion in interpretation of susceptibility (1) Additional cost for therapeutic serum monitoring (1) For Enterococci implies synergy with an active cell wall agent (2) Avoid if CrCl <=60 mL/min (3) Adjunctive therapy, do not use as monotherapy (4) Varies based on agent, consult detailed reference (5) 40% of isolates represent oxacillin-resistant strains (ORSA). NF- Non-formulary ***It is a general recommendation to avoid agent with >=15-20% resistance for empiric therapy***